

Write your name here

Surname

Other names

Pearson Edexcel
Level 3 GCE

Centre Number

--	--	--	--	--	--

Candidate Number

--	--	--	--	--

Geography

Advanced Paper 3

Thursday 14 June 2018 – Afternoon
Time: 2 hours 15 minutes

Paper Reference

9GE0/03

You must have:

Resource Booklet (enclosed)
Calculator, ruler

Total Marks

--

Instructions

- Use **black** ink or ball-point pen.
- **Fill in the boxes** at the top of this page with your name, centre number and candidate number.
- Answer **all** questions.
- Answer the questions in the spaces provided – *there may be more space than you need.*
- Calculators may be used.
- Any **calculations** must show **all** stages of **working out** and a **clear answer**.

Information

- The total mark for this paper is 70.
- The marks for **each** question are shown in brackets – *use this as a guide as to how much time to spend on each question.*

Advice

- You are **advised** to spend the first **15 minutes** reading the Resource Booklet.
- Read each question carefully before you start to answer it.
- Try to answer every question.
- Check your answers if you have time at the end.

Turn over ►

P52373A

©2018 Pearson Education Ltd.

1/1/1/1/1



Pearson

DO NOT WRITE IN THIS AREA

DO NOT WRITE IN THIS AREA

DO NOT WRITE IN THIS AREA

BLANK PAGE



Answer ALL questions. Write your answers in the spaces provided.

You must use the Resource Booklet provided and your own knowledge and understanding from across your course of study to answer the questions in this paper.

- 1** Explain **one** reason why many national governments have been keen to join free trade blocs.

.....

.....

.....

.....

.....

.....

.....

.....

.....

.....

(Total for Question 1 = 4 marks)

DO NOT WRITE IN THIS AREA



- 2 (a) Table 1 below shows data for the 10 countries of ASEAN (Association of Southeast Asian Nations) in 2013.

Complete the table below and calculate the GDP per capita (per person) for the ASEAN free trade bloc.

Show your working in the space provided below the table.

(4)

Countries	Size of economy GDP (US\$ billions)	Population (millions)	GDP per capita (US\$)
Brunei	16.2	0.4	40 500
Cambodia	16.2	15.2	1 066
Indonesia	868.4	250.8	3 462
Laos	11.0	6.8	1 617
Malaysia	313.2	29.7	10 545
Myanmar	44.9	62.0	724
Philippines	272.1	98.4	2 765
Singapore	297.9	5.4	55 167
Thailand		67.0	5 781
Vietnam	170.6	89.7	1 902
ASEAN (total)			

Table 1

Economic and population data for the 10 ASEAN countries



DO NOT WRITE IN THIS AREA

DO NOT WRITE IN THIS AREA

DO NOT WRITE IN THIS AREA

(b) Explain why the GDP per capita for the ASEAN free trade bloc may be a misleading statistic.

(4)

.....

.....

.....

.....

.....

.....

.....

.....

.....

(Total for Question 2 = 8 marks)



3 Study Table 1 on Page 4 of the Question Paper and Figure 2 in Section A of the Resource Booklet, both of which show data for the 10 ASEAN countries.

Analyse the differences in their social, economic and political development.

Area with horizontal dotted lines for writing the answer.

(Total for Question 3 = 8 marks)

DO NOT WRITE IN THIS AREA

DO NOT WRITE IN THIS AREA

DO NOT WRITE IN THIS AREA



DO NOT WRITE IN THIS AREA

DO NOT WRITE IN THIS AREA

DO NOT WRITE IN THIS AREA

4 Study Figure 3 in Section A of the Resource Booklet.

Analyse the varied level of interconnectedness within the ASEAN free trade bloc.

Area with horizontal dotted lines for writing.

(Total for Question 4 = 8 marks)



5 Study Section B and Section C of the Resource Booklet.

Evaluate the role of superpowers in the development of the Southeast Asian region.

(18)

Area with horizontal dotted lines for writing.

DO NOT WRITE IN THIS AREA

DO NOT WRITE IN THIS AREA

DO NOT WRITE IN THIS AREA



DO NOT WRITE IN THIS AREA

DO NOT WRITE IN THIS AREA

DO NOT WRITE IN THIS AREA

Large writing area with horizontal dotted lines.



DO NOT WRITE IN THIS AREA

DO NOT WRITE IN THIS AREA

DO NOT WRITE IN THIS AREA

(Total for Question 5 = 18 marks)



You should have read the whole of the Resource Booklet, including Section D, before attempting this question.

6 Evaluate the view that climate change and natural hazards pose the most serious threat to the economic, social and political stability of Southeast Asia.

(24)

.....

.....

.....

.....

.....

.....

.....

.....

.....

.....

.....

.....

.....

.....

.....

.....

.....

.....

.....

.....

.....

.....

.....

.....

.....

.....

DO NOT WRITE IN THIS AREA

DO NOT WRITE IN THIS AREA

DO NOT WRITE IN THIS AREA



DO NOT WRITE IN THIS AREA

DO NOT WRITE IN THIS AREA

DO NOT WRITE IN THIS AREA

Handwriting practice area with 20 horizontal dotted lines.



DO NOT WRITE IN THIS AREA

DO NOT WRITE IN THIS AREA

DO NOT WRITE IN THIS AREA

(Total for Question 6 = 24 marks)

TOTAL FOR PAPER = 70 MARKS



P 5 2 3 7 3 A 0 1 3 1 6

DO NOT WRITE IN THIS AREA

DO NOT WRITE IN THIS AREA

DO NOT WRITE IN THIS AREA

BLANK PAGE



DO NOT WRITE IN THIS AREA

DO NOT WRITE IN THIS AREA

DO NOT WRITE IN THIS AREA

BLANK PAGE



P 5 2 3 7 3 A 0 1 5 1 6

DO NOT WRITE IN THIS AREA

DO NOT WRITE IN THIS AREA

DO NOT WRITE IN THIS AREA

BLANK PAGE



Pearson Edexcel Level 3 GCE

Geography

**Advanced
Paper 3**

Thursday 14 June 2018 – Afternoon
Resource Booklet

Paper Reference
9GE0/03

Do not return this Resource Booklet with the question paper.

Turn over ►

P52373A

©2018 Pearson Education Ltd.

1/1/1/1/1



Pearson

Contrasts and challenges in Southeast Asia

SECTION A

ASEAN – A free trade bloc

ASEAN (Association of Southeast Asian Nations) is a free trade bloc that was formed in 1967. The founder members were Indonesia, Malaysia, the Philippines, Singapore and Thailand. The aims were to:

- Improve economic growth through greater integration of their economies
- Encourage social progress through improvements in education and health provision
- Improve regional security
- Provide a mechanism for resolving regional disputes.

Since its foundation it has expanded, adding Brunei, Cambodia, Laos, Myanmar (Burma) and Vietnam to its membership. Also, it has broadened its aims to include:

- Protection of the environment
- Acting as a counterbalance to neighbouring superpowers, China and India
- A possible movement towards a common currency similar to the Euro.



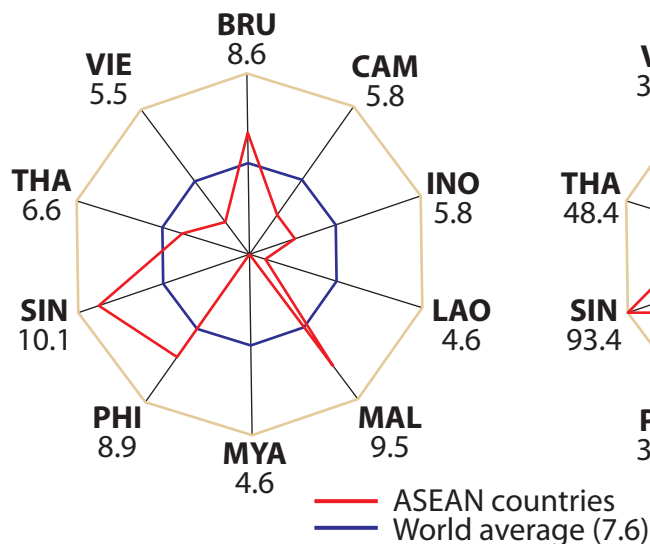
Figure 1

The location of the ASEAN member states

The member states of ASEAN have complex histories with frontiers largely established in colonial times and often unrelated to ethnic, geographic or historic divisions. With significant physical barriers both between states and within them, there has been little regional unity. In fact, there is a long history of disputes between the states which has continued until now, despite membership of ASEAN. There are significant social, economic and political differences between the 10 member states.

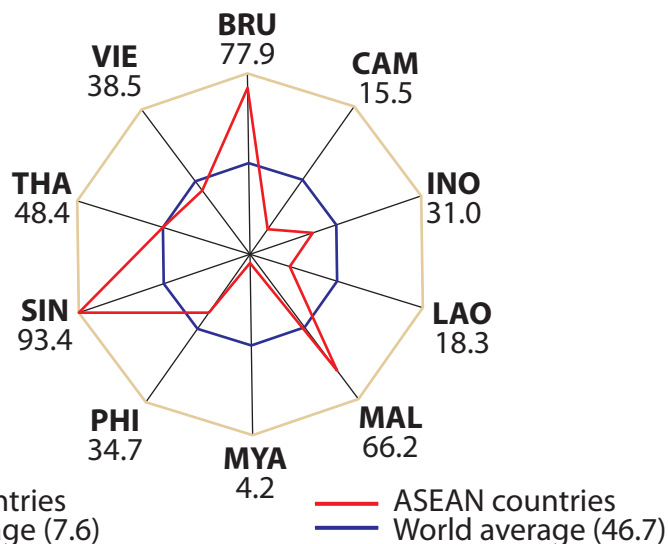
EDUCATION

Years of schooling



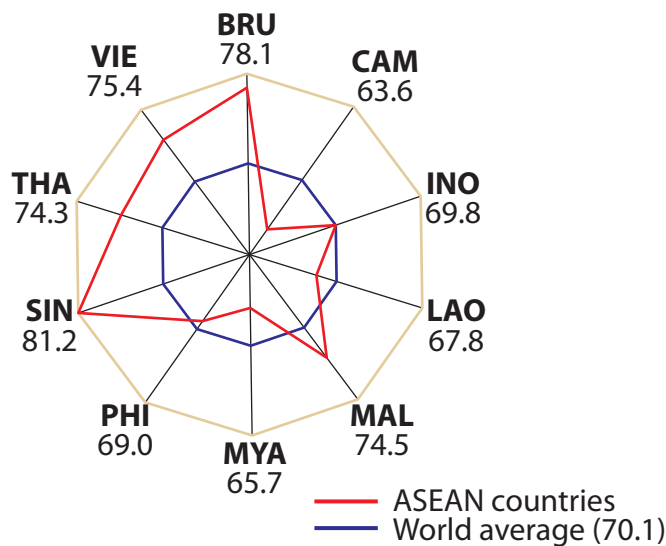
GOVERNANCE/RULE OF LAW

Higher scores = Stronger governance and rule of law



HEALTH

Life expectancy



Key to countries	
BRU	= Brunei
CAM	= Cambodia
INO	= Indonesia
LAO	= Laos
MAL	= Malaysia
MYA	= Myanmar
PHI	= Philippines
SIN	= Singapore
THA	= Thailand
VIE	= Vietnam

Figure 2

Selected social and political data for the ASEAN countries

- Globalisation (as measured by the KOF index) varies from Singapore which ranks 6th to Cambodia, Laos, Myanmar and Vietnam, that are amongst the least globalised states in the world.
- Corruption, as measured by the Index of Perceived Corruption, is equally diverse with Singapore, once again, topping the list having very low levels of corruption whilst, Cambodia, Laos, Myanmar and Vietnam are amongst the most corrupt states in the world.
- In all 10 ASEAN countries, the GINI coefficient for both income and wealth inequalities are high (between 0.34 in Laos to 0.45 in Singapore), and rising year by year.
- There are also significant economic and social variations within most member states with urban areas growing rapidly at between 2% and 5% per year.
- Today, an estimated 45.8% of the region's population live in urban areas. In 1950, this was only 15.4%.
- Urbanisation rates are rapid as rural economies change from subsistence farming to more commercial agriculture.
- Port cities; Singapore, Manila (Philippines), Bangkok (Thailand), Jakarta (Indonesia), Ho Chi Minh City (Vietnam) and Hanoi (Vietnam), connected to global markets, are especially important and have become major economic centres.

Recent improvements in infrastructure have begun to improve connectivity between these very diverse economies. Funding from IGOs, including the World Bank and the Asian Development Bank (ADB), has improved interconnections and interdependencies have grown. Other significant investors include the two 'local superpowers', India and China. These are engaged in planning a rare co-operative venture in establishing the BCIM (Bangladesh, China, India and Myanmar) multimodal corridor between India and China linking the Indian to the Pacific Ocean by road, rail and telecommunications. Nonetheless some areas remain 'switched off' and poorly connected.

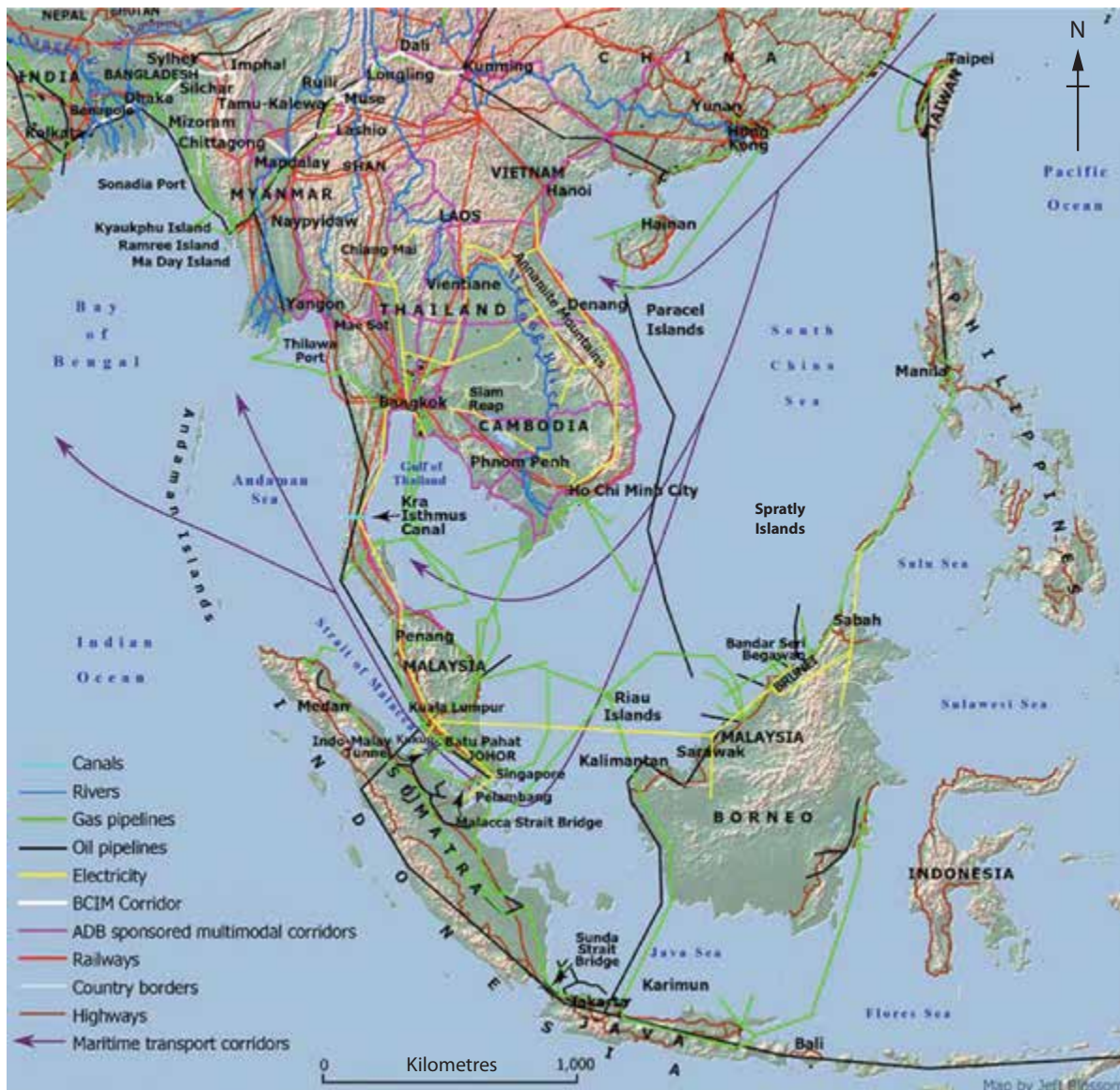


Figure 3
Interconnections between the ASEAN countries

SECTION B

Trade Matters

The members of ASEAN have established trade without tariffs both within their trade bloc and with significant regional neighbours, most notably China.

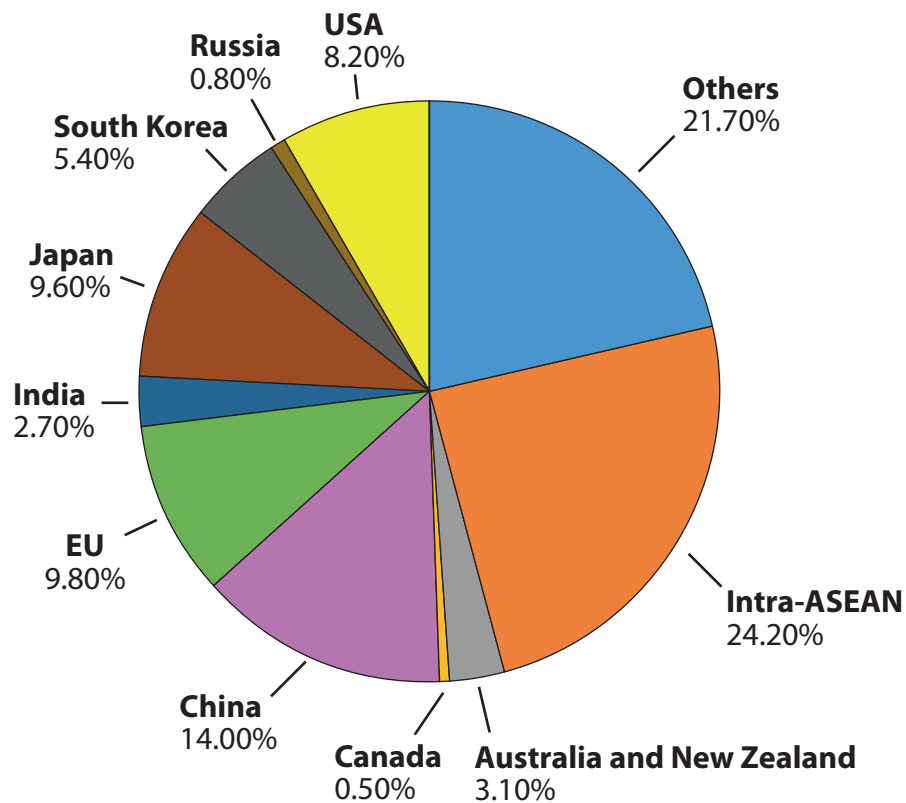


Figure 4

The trading partners of the ASEAN free trade bloc

- The level of intra-ASEAN trade (trade between members of ASEAN) is relatively low when compared with other trading blocs – for example intra-EU trade is over 70% of their total trade.
- There is also variation from country to country both in the direction of trade and the goods traded (see Figure 5).

	1	2	3	4	5
Brunei	Japan	ASEAN	South Korea	China	EU
Cambodia	ASEAN	China	USA	EU	Japan
Indonesia	ASEAN	Japan	China	EU	South Korea
Laos	ASEAN	China	EU	Japan	South Korea
Malaysia	ASEAN	China	Japan	EU	USA
Myanmar	ASEAN	China	Japan	India	South Korea
Philippines	ASEAN	Japan	USA	China	EU
Singapore	ASEAN	EU	China	USA	Japan
Thailand	ASEAN	Japan	China	EU	USA
Vietnam	China	ASEAN	EU	Japan	USA

Figure 5

The five most important trading partners of individual ASEAN members

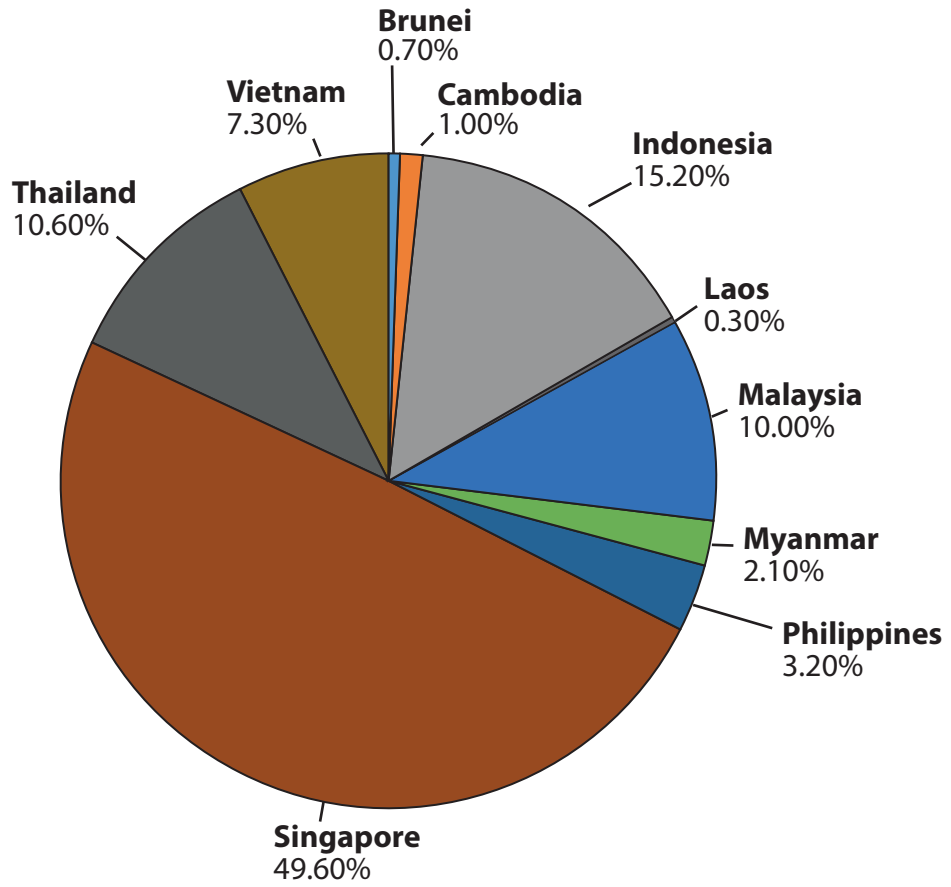


Figure 6

The share of Foreign Direct Investment received by individual ASEAN member countries

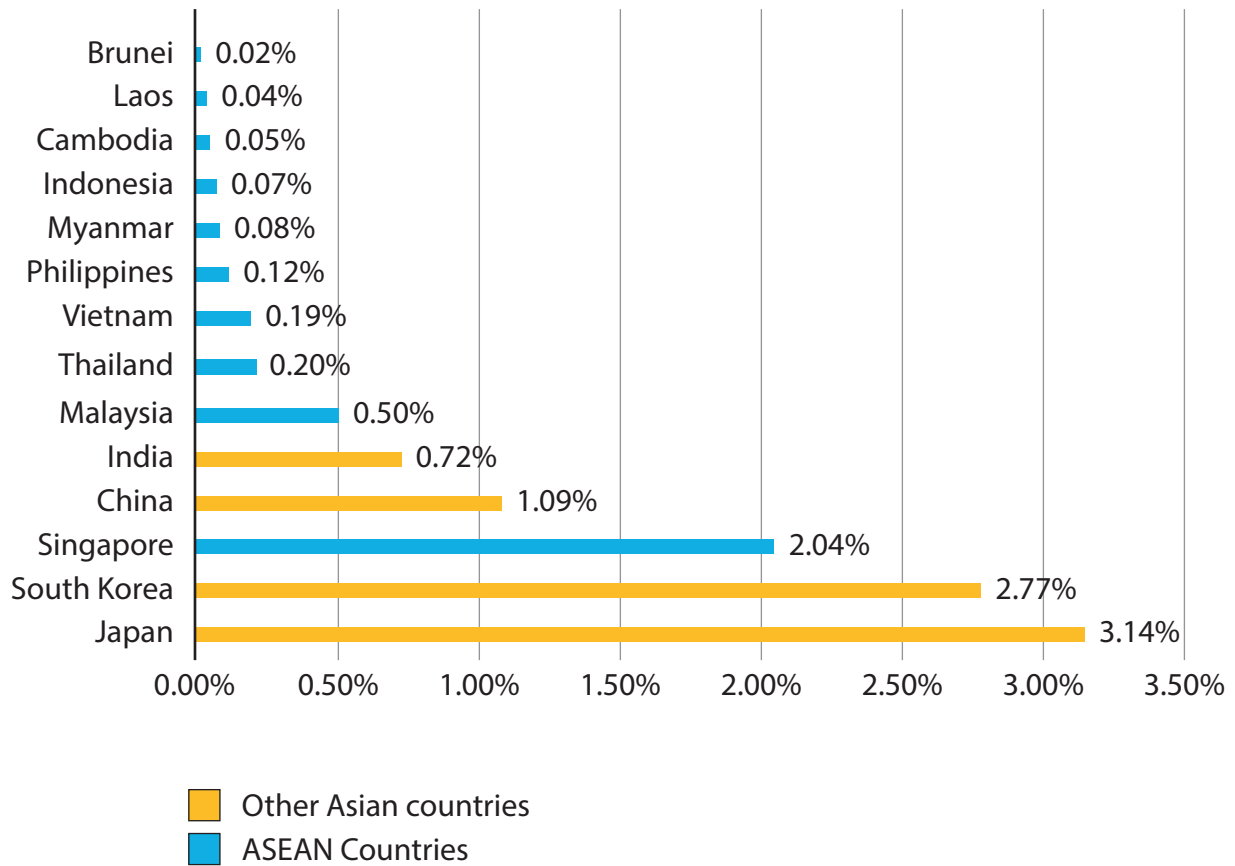


Figure 7

Average expenditure on Research and Development as a % of GDP for ASEAN countries and selected others

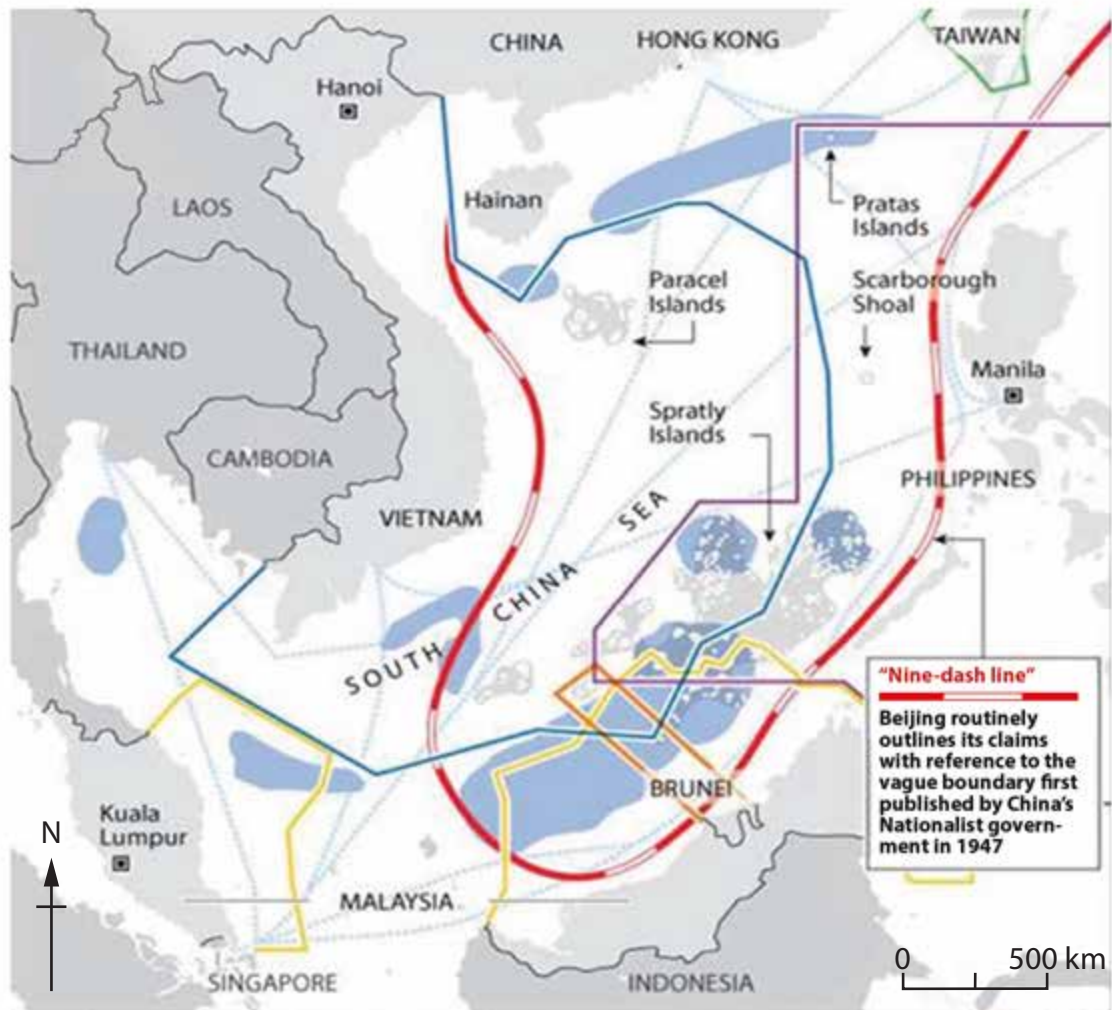
SECTION C

Superpower issues

- The South China Sea is one of the busiest in the world but also one of the most contested.
- China claims possession of two groups of islands ownership of which, under international maritime law, gives control of the waters around them but this claim is disputed by several ASEAN members and the USA, and was rejected by the international courts.
- Since 1995, joint naval exercises have been conducted annually between the USA and seven out of the ten ASEAN members.
- There is tension between China, ASEAN members and the USA, not least because over \$6 trillion of trade is shipped across this sea but also because of the potential for huge oil and gas finds in its shallow waters.
- For some, this is the most serious global 'hotspot' and poses a real threat for world peace.

SOUTH CHINA SEA DISPUTES

Territorial claims	China	Taiwan	Brunei	Malaysia	Philippines	Vietnam
Island claims						
Spratly Islands	●	●		●	●	●
Paracel Islands	●	●				●
Pratas Islands	●	●				●
Scarborough Shoal	●	●			●	
Oil/gas fields	●					
International shipping lanes	---					
Capital city	■					



"Nine-dash line"
 Beijing routinely outlines its claims with reference to the vague boundary first published by China's Nationalist government in 1947

Figure 8

The contested South China Sea

SECTION D

Environmental challenges: past, present and future

- Southeast Asia is exposed to almost all types of natural hazards.
- In recent years, major disasters have included the Boxing Day Tsunami of 2004, Cyclone Nargis in 2008, the Luzon Earthquake in 2009 and Typhoon Haiyan in 2013.
- Southeast Asia is highly vulnerable to natural hazards because:
 1. a large proportion of the population and economic activity is concentrated in lowland areas and along coastlines
 2. the region is heavily reliant on agriculture for livelihoods
 3. there is a high dependence on natural resources and forestry
 4. the level of extreme poverty remains high.

Country	Earthquake	Flood	Landslide	Drought	Storm (Typhoon/ Cyclone)	Volcano	Forest fire	Tsunami
Brunei	X	X	X	X	X		X	
Cambodia	X	XXX	X	XX	X		X	
Indonesia	XXX	XXX	XXX	XX	XX	XXX	XX	XXX
Laos	X	XXX	XX	XX	XX	X	X	
Malaysia	X	XXX	XX	X	X		XX	X
Myanmar	XX	XXX	XX	XX	XXX		X	X
Philippines	XXX	XXX	XXX	XX	XXX	XX	X	X
Singapore	X	XX			X			
Thailand	X	XXX	XX	XX	XX		X	X
Vietnam	X	XXX	XX	XX	XXX		X	X

XXX = High Risk XX = Moderate Risk X = Low Risk

Figure 9
Disaster matrix for the ASEAN countries

- The vulnerability to, and impact of, climate change is a major concern to ASEAN both because of its direct impact in terms of sea-level rise but also the strong likelihood that it will increase the risk of disasters.
- A study carried out by Asian Development Bank (ADB) revealed that the mean temperature in the region increased by 0.3° Celsius per decade between 1951 and 2010 whilst precipitation has fallen and sea levels have risen 1 to 3 mm per year.
- The same study projects a 4.8° rise in mean annual temperature and a 700 mm rise in mean sea level by 2100.
- A rise in sea level would result in major problems for many of ASEAN's large coastal cities, such as Jakarta, Bangkok and Manila.
- Heat waves, droughts, floods and tropical cyclones have also become more intense and more frequent.
- Projections of economic losses include a decline in rice yield potential of up to 50% by 2100 and a loss of 6.7% of Gross Domestic Product (GDP) each year until the end of this century.

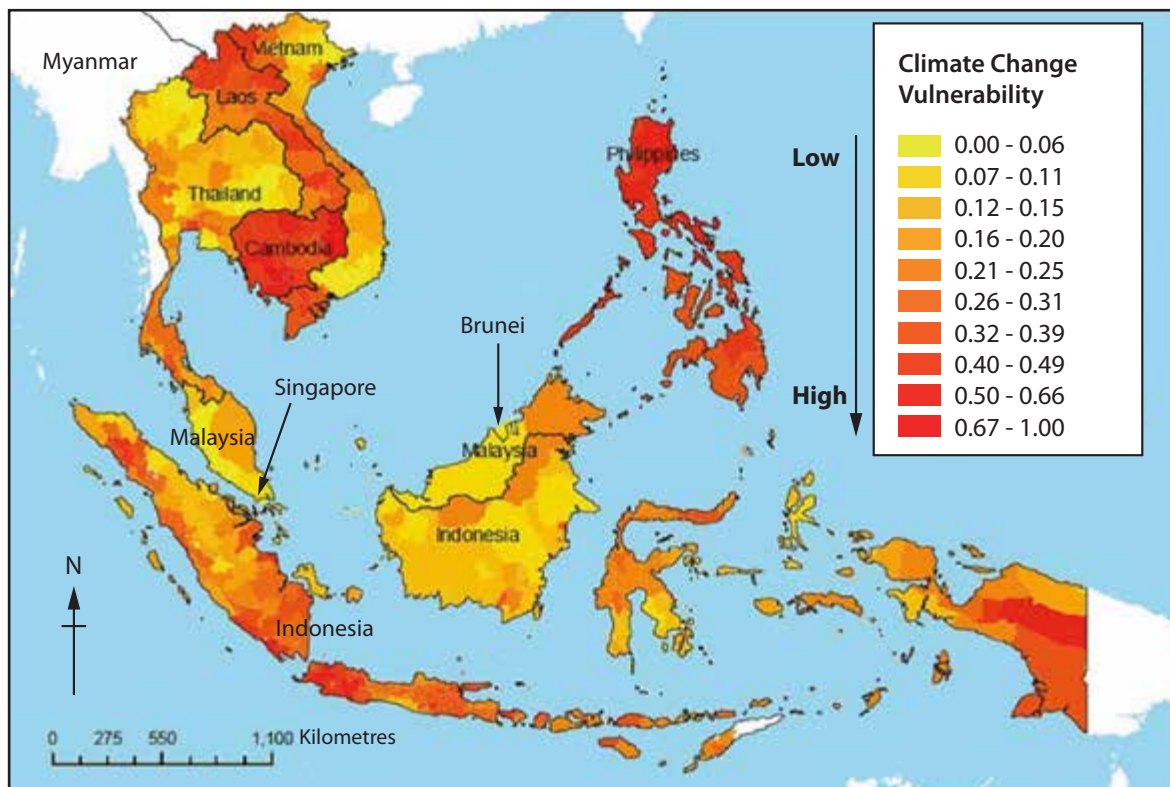


Figure 10

**Climate Change Vulnerability across the ASEAN region
(no data available for Myanmar)**

BLANK PAGE

BLANK PAGE

BLANK PAGE

Pearson Education Ltd. gratefully acknowledges all following sources used in preparation of this paper:

Figure 1 - Sourced from: <http://www.seawapa.co/2013/01/asian-economic-community-by-2015.html>

Figure 3 - Sourced from: <https://www.paragkhanna.com/home/2016/4/1/asean-map>

Figure 8 - U.S. Energy Information Administration, U.S. Department of State, Middlebury College, National Geographic

Figure 10 - Sourced from: <https://www.idrc.ca/sites/default/files/sp/Documents%20EN/climate-change-vulnerability-mapping-sa.pdf>

Every effort has been made to contact copyright holders to obtain their permission for the use of copyright material. Pearson Education Ltd. will, if notified, be happy to rectify any errors or omissions and include any such rectifications in future editions.